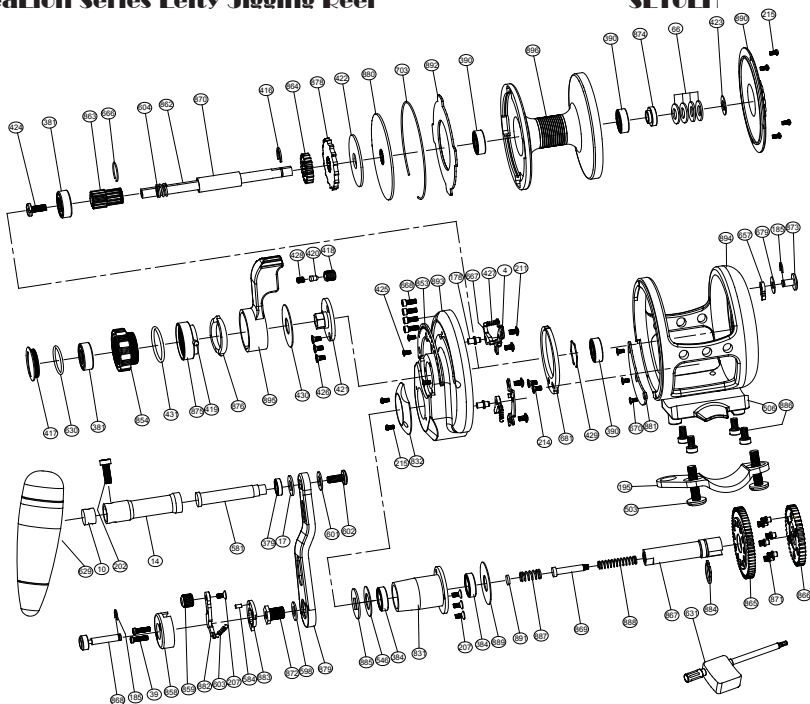


SeaLion Series Lefty Jigging Reel

SL10LH



No.	PARTS NAME	No.	PARTS NAME	No.	PARTS NAME
4	Set plate	430	Drag control lever washer	863	High speed pinion gear
10	Handle shaft retainer	431	"O" ring	864	Low speed pinion gear
14	Handle shaft coat	503	Fixed screws	865	Drive gear-high speed
17	Washer 2	506	Reel foot	866	Drive gear-low speed
39	Button screw	546	Drive shaft washer	867	Drive shaft
66	Spring spool washer	581	T handle nail	868	Push button shaft
178	Set plate nail	882	Push slice	869	Slide pole
185	"E" washer	883	Stopping slice	870	Spool cannulation
195	Rod clamp	584	Push nail	871	Variable-speed pin
202	Handle knob screw 1	598	Handle bolt washer	872	Handle bolt
207	Push slice screw	601	Washer 3	873	Strike alert lever
211	Set plate screws	602	Handle knob screw 2	874	Shaft coat
214	Alert ratchet screws	603	Push spring	875	Pre-program key
215	Cover screw	604	Spool shaft spring	876	Pre-program plate
379	Ball bearing (S117)	629	Handle knob	878	Anti-reverse ratchet
381	Ball bearing (S606)	630	"O" ring	879	Handle arm
384	Ball bearing (S6700)	631	Wrench	880	Front drag plate
390	Ball bearing (S696)	657	Alarm sound gear	881	Close cover
416	"E" washer	666	Small ring	884	"C" washer
417	Drag knob cover	667	Anti-reverse dog	885	Handle washer
418	Sound coat	668	Side plate screws	886	Reel foot screws
419	Pre-program key pin	670	Close cover screws	887	Drive shaft spring
420	Sound nail	679	Washer 1	888	Shaft insert spring
421	Bearing cover	681	Alert ratchet	889	Drive shaft coat washer
422	Spool spring washer	703	Spool ring	890	Cover
423	Drag plate washer	831	Drive shaft coat	891	Variable-speed washer
424	Spool shaft screw	832	Drive shield	892	Drag plate
425	Screw embedded clip	853	Embedded clip	893	Right plate
426	Screw for bearing cover	854	Drag tension knob	894	Frame
427	Stopping slock spring	858	Button basement	895	Drag control lever
428	Sound nail spring	859	Button lever knob	896	Spool
429	Bearing ring	862	Spool shaft		