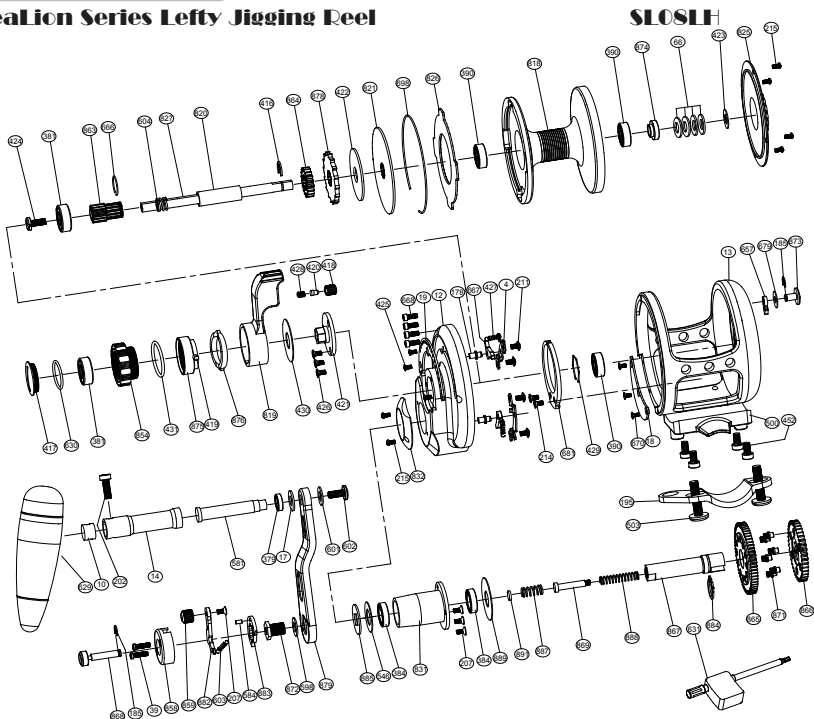


SeaLion Series Lefty Jigging Reel



No.	PARTS NAME	No.	PARTS NAME	No.	PARTS NAME
4	Set plate	426	Screw for bearing cover	825	Cover
10	Handle shaft retainer	427	Stopping stock spring	826	Drag plate
12	Right plate	428	Sound nail spring	827	Spool shaft
13	Frame	429	Bearing ring	831	Drive shaft coat
14	Handle shaft coat	430	Drag control lever washer	832	Drive shield
17	Washer 2	431	"O" ring	854	Drag tension knob
18	Close cover	452	Reel foot screws	858	Button basement
19	Embedded clip	500	Reel foot	859	Button lever knob
39	Button screw	503	Fixed screws	863	High speed pinion gear
66	Spring spool washer	546	Drive shaft washer	864	Low speed pinion gear
178	Set plate nail	581	T handle nail	865	Drive gear-high speed
185	"E" washer	584	Push nail	866	Drive gear-low speed
195	Rod clamp	598	Handle bolt washer	867	Drive shaft
202	Handle knob screw 1	601	Washer 3	868	Push button shaft
207	Push slice screw	602	Handle knob screw 2	869	Side pole
211	Set plate screws	603	Push spring	871	Variable-speed pin
214	Alert ratchet screws	604	Spool shaft spring	872	Handle bolt
215	Cover screw	629	Handle knob	873	Strike alert lever
379	Ball bearing (S117)	630	"O" ring	874	Shaft coat
381	Ball bearing (S606)	631	Wrench	875	Pre-program key
384	Ball bearing (S6700)	657	Alarm sound gear	876	Pre-program plate
390	Ball bearing (S696)	666	Small ring	878	Anti-reverse ratchet
416	"E" washer	667	Anti-reverse dog	879	Handle arm
417	Drag knob cover	668	Side plate screws	882	Push slice
418	Sound coat	670	Close cover screws	883	Stopping slice
419	Pre-program key pin	679	Washer 1	884	"C" washer
420	Sound nail	681	Alert ratchet	885	Handle washer
421	Bearing cover	698	Spool ring	887	Drive shaft spring
422	Spool spring washer	818	Spool	888	Shaft insert spring
423	Drag plate washer	819	Drag control lever	889	Drive shaft coat washer
424	Spool shaft screw	820	Spool cannulation	891	Variable-speed washer
425	Screw embedded clip	821	Front drag plate		